

CRANE CREEK RACQUET CLUB PHASE SIX

Section 12, Township 38 South, Range 40 East, Martin County, Florida

CERTIFICATION OF OWNERSHIP AND DEDICATION

STATE OF FLORIDA
COUNTY OF PALM BEACH S.S.

GENESIS HOLDINGS, INC. A FLORIDA CORPORATION, BY AND THROUGH ITS UNDERSIGNED OFFICERS, DOES HEREBY CERTIFY THAT IT IS THE OWNER OF THE PROPERTY DESCRIBED HEREON AND DOES HEREBY DEDICATE AS FOLLOWS:

- STREETS: THE STREETS SHOWN ON THIS PLAT OF CRANE CREEK RACQUET CLUB PHASE SIX ARE HEREBY DEDICATED TO BE PRIVATE STREETS AND ARE DEDICATED TO THE CRANE CREEK PROPERTY OWNER'S ASSOCIATION, INC. FOR THE USE OF THE OWNERS OF LOTS IN CRANE CREEK RACQUET CLUB. THE BOARD OF COUNTY COMMISSIONERS OF MARTIN COUNTY, SHALL BEAR NO RESPONSIBILITY, DUTY OR LIABILITY REGARDING SUCH STREETS.
- UTILITY EASEMENTS: THE UTILITY EASEMENTS SHOWN ON THIS PLAT OF CRANE CREEK RACQUET CLUB PHASE SIX MAY BE USED FOR UTILITY PURPOSES BY ANY UTILITY COMPANY IN COMPLIANCE WITH SUCH ORDINANCES AND REGULATIONS AS MAY BE ADOPTED FROM TIME TO TIME BY THE BOARD OF COUNTY COMMISSIONERS OF MARTIN COUNTY.
- DRAINAGE EASEMENTS: THE DRAINAGE EASEMENTS SHOWN ON THIS PLAT OF CRANE CREEK RACQUET CLUB PHASE SIX MAY BE USED FOR DRAINAGE PURPOSES IN COMPLIANCE WITH SUCH ORDINANCES AND REGULATIONS AS MAY BE ADOPTED FROM TIME TO TIME BY THE BOARD OF COUNTY COMMISSIONERS OF MARTIN COUNTY.
- THE PRESERVATION ZONE AS SHOWN ON THIS PLAT OF CRANE CREEK RACQUET CLUB PHASE SIX, SHALL REMAIN FREE OF ALTERATIONS AND STRUCTURES EXCEPT FOR EROSION CONTROL OR ACCESS AS APPROVED BY THE BOARD OF COUNTY COMMISSIONERS OF MARTIN COUNTY.

SIGNED AND SEALED THIS 21st DAY OF August, 1979, ON BEHALF OF SAID CORPORATION BY ITS PRESIDENT AND ATTESTED TO BY ITS SECRETARY.

ATTEST: *[Signature]*
WYN POPE
SECRETARY

GENESIS HOLDINGS, INC.
(CORPORATE SEAL)

BY: *[Signature]*
PETER D. CUMMINGS
PRESIDENT

ACKNOWLEDGEMENT

STATE OF FLORIDA
COUNTY OF PALM BEACH S.S.

BEFORE ME, THE UNDERSIGNED NOTARY PUBLIC, PERSONALLY APPEARED PETER D. CUMMINGS AND WYN POPE, TO ME WELL KNOWN TO BE THE PRESIDENT AND SECRETARY, RESPECTIVELY, OF GENESIS HOLDINGS, INC., A FLORIDA CORPORATION, AND THEY ACKNOWLEDGED THAT THEY EXECUTED SUCH INSTRUMENT AS SUCH OFFICERS OF SAID CORPORATION.

WITNESS, MY HAND AND OFFICIAL SEAL THIS 21st DAY OF August, 1979.

MY COMMISSION EXPIRES: March 31, 1982

NOTARY PUBLIC STATE OF FLORIDA AT LARGE
MY COMMISSION EXPIRES MARCH 31, 1982
BONARD WILK MATTHEWS BONDING AGENCY

NOTARY PUBLIC STATE OF FLORIDA AT LARGE
[Signature]

TITLE CERTIFICATION

STATE OF FLORIDA
COUNTY OF PALM BEACH

I, PETER VAN ANDEL, A MEMBER OF THE FLORIDA BAR, HEREBY CERTIFY THAT AS OF 30th DAY OF September, 1979:

- APPARENT RECORD TITLE TO THE LAND DESCRIBED AND SHOWN ON THIS PLAT IS IN THE NAME OF THE PERSON (S), CORPORATION, OR OTHER ENTITY EXECUTING THE DEDICATION HEREON.
- ALL RECORDED MORTGAGES NOT SATISFIED OR RELEASED OF RECORD ENCUMBERING THE LAND DESCRIBED HEREON ARE AS FOLLOWS:
MORTGAGE DATED JUNE 11, 1979, FROM GENESIS HOLDINGS, INC. AND SOUTH FLORIDA LAND, INC., BOTH FLORIDA CORPORATIONS, TO THE TORONTO-DOMINION BANK, A BANK CHARTERED UNDER THE BANK ACT OF CANADA, RECORDED IN OFFICIAL RECORD BOOK 473, PAGE 152, PUBLIC RECORDS OF MARTIN COUNTY, FLORIDA.

DATED THIS 10th DAY OF October, 1979.

[Signature]
PETER VAN ANDEL
ATTORNEY AT LAW
251 SOUTH COUNTY ROAD
PALM BEACH, FLA. 33480

COUNTY APPROVAL

STATE OF FLORIDA
COUNTY OF MARTIN

THIS PLAT IS HEREBY APPROVED BY THE UNDERSIGNED ON THE DATE OR DATES INDICATED.

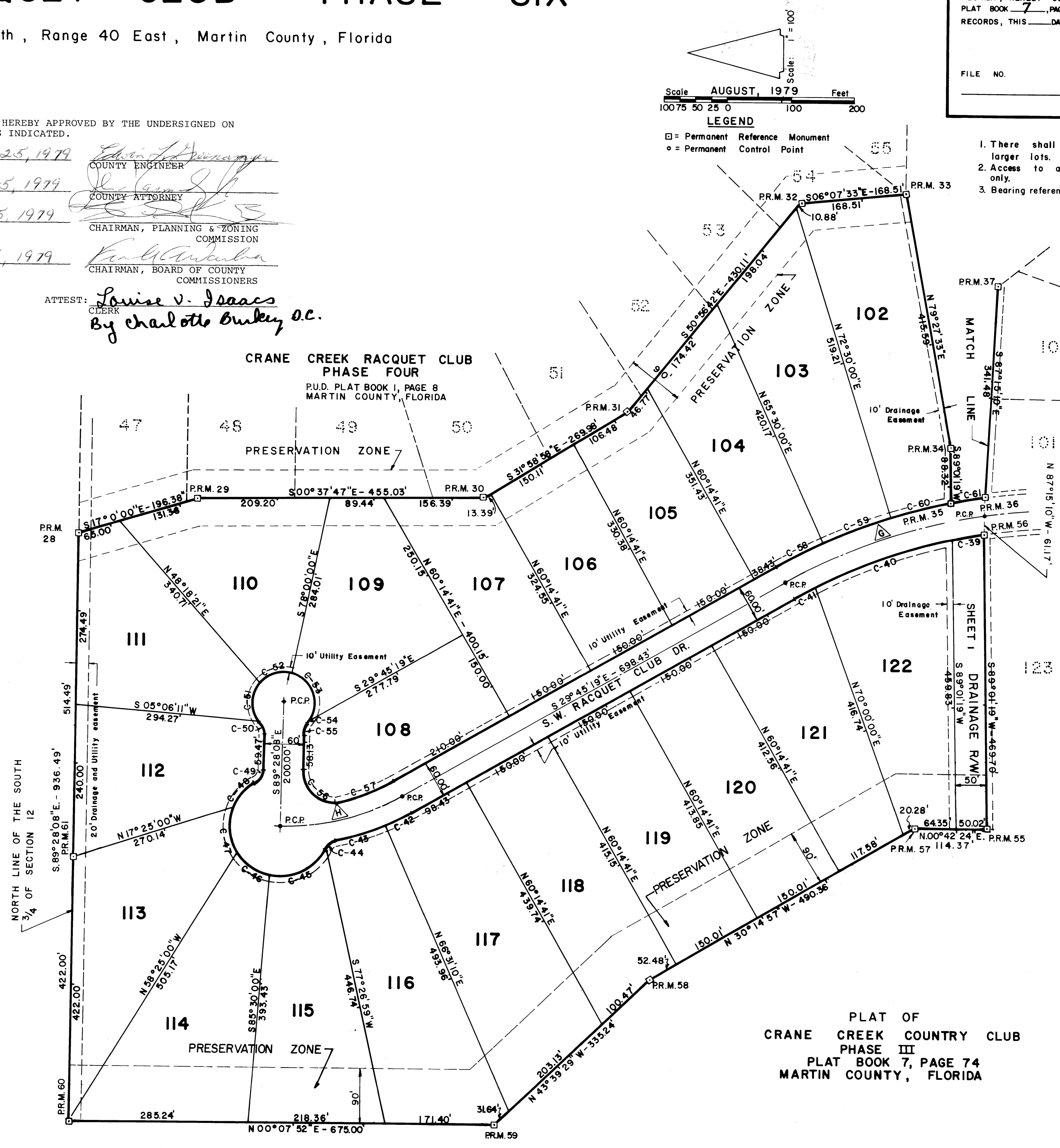
DATE October 25, 1979
COUNTY ENGINEER
[Signature]

DATE October 25, 1979
COUNTY ATTORNEY
[Signature]

DATE October 25, 1979
CHAIRMAN, PLANNING & ZONING COMMISSION
[Signature]

DATE October 25, 1979
CHAIRMAN, BOARD OF COUNTY COMMISSIONERS
[Signature]

ATTEST: *[Signature]*
Louise V. Isaacs
CLERK
By *[Signature]*
Charlotte Oakley, O.C.



1, LOUISE V. ISAACS, CLERK OF THE CIRCUIT COURT OF MARTIN COUNTY, FLORIDA, HEREBY CERTIFY THAT THIS PLAT WAS FILED FOR RECORD IN PLAT BOOK 7, PAGE 102, MARTIN COUNTY, FLORIDA, PUBLIC RECORDS, THIS 21 DAY OF AUGUST, 1979.

LOUISE V. ISAACS, CLERK
CIRCUIT COURT
MARTIN COUNTY, FLORIDA

FILE NO. _____ BY: _____ DEPUTY CLERK

NOTES

- There shall be no lot splits except to create larger lots.
- Access to all lots to be from internal road system only.
- Bearing referenced to True North.

CRANE CREEK RACQUET CLUB
PHASE SIX
SHEET 1 OF 2

PLAT OF
CRANE CREEK COUNTRY CLUB
PHASE III
PLAT BOOK 7, PAGE 74
MARTIN COUNTY, FLORIDA